



Overview

ECAT is an easy-to-use tool which allows designers to check building energy performance compliance with UK Building Regulations Part L2 (non domestic). The software incorporates SBEM, the DCLG approved National Calculation Tool.

ECAT also incorporates the generation of **Energy Performance Certificates**.

Life Cycle Analysis (LCA) feature - **ECAT** can calculate the building's 'carbon footprint' taking into account lifetime CO2 emissions and energy associated with both the building materials and the building in use.

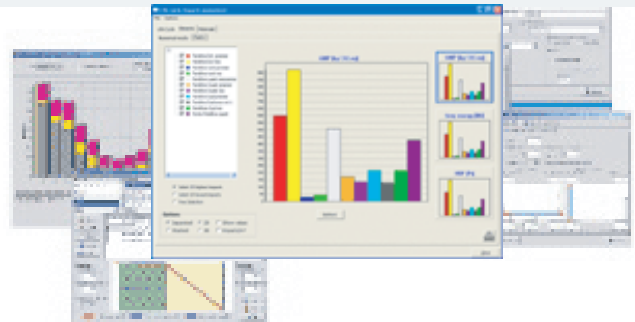
ECAT includes additional functionality to assist users in optimising energy performance including calculation of thermal characteristics of building envelope elements. **ECAT** also has a CEN (EN13790) calculation mode.

Features

- Calculates building CO2 emission rate (BER) and compares with Target Emission Rate (TER) for compliance check.
- Generates Energy Performance Certificates for new and existing buildings in accordance with EPBD
- Graphical and tabular reports of monthly and annual energy usage (kWh/m2) for Space heating, Cooling, DHW, Lighting, Auxiliary energy and Equipment.
- **LCA** - ECAT generates a graphical and tabular display of building lifetime CO2 emissions and energy use.
- Checks against design limits for building fabric and building services.
- ECAT is approved by the DCLG so that the results it produces are acceptable as part of a Part L2 Building Control submission.
- Easy-to-use interface reflecting building design logic.
- Flexible data entry order and step-by-step guidance.
- U-value and Cm -value calculation for user defined composite materials. Condensation risk analysis.
- Window shading calculation.
- Comprehensive databases of glazing, building materials and building element constructions.
- CEN calculation mode.

Benefits

- Cost-effective tool for Part L compliance checking and improving building energy performance.
- Unique LCA calculation mode for building lifetime carbon footprint analysis.
- Easy-to-use for architects and engineers with no previous energy modelling experience.
- Software designed by experts with over 20 years experience in building energy modelling in the Swiss and other demanding European regulatory environments.
- Software design team works closely with European regulatory bodies.
- E4tech Software is committed to the ongoing development of ECAT to meet the needs of sustainable building designers.



About E4tech software

E4tech is a sustainable energy consulting firm based in the UK and Switzerland. E4tech's Sustainable Buildings Group is based in Lausanne, Switzerland and has more than 20 years experience in developing building energy modelling software in line with a range of European and Swiss standards including EN 832, EN 13789, EN 13790 and EN 12831. SIA 380/1, Minergie® and Minergie® P. E4tech's flagship software product, Lesosai 5.7, has now been developed to meet UK market requirements and named 'ECAT'. For more information about E4tech and its other software products, visit the E4tech website: www.e4tech.com

Purchasing & Download

ECAT will be available for download and purchase in the coming weeks.

Support & Training

ECAT incorporates extensive interactive Help facilities. Support queries may also be raised via an email form or by telephone. Training will be offered by our training partners, we will also be making available accredited 'Competent Persons' training sessions. Users accredited as a 'Competent Person' will be able to submit quality assured compliance reports and EPCs which will be accepted by Building Control authorities as evidence of compliance.